

# Swindon Town Football Club



## Official Programme 6p



## Sheffield Wednesday

12th February 1972

### OFFICIALS

Referee  
Mr R C Crabb (Exeter)

### Linesmen

Red Flag  
Mr J E Bent (Hemel Hempstead)

Yellow Flag  
Mr R Dix (Fareham)

### SWINDON TOWN

- 1 Downsborough
- 2 Butler
- 3 Trollope
- 4 Bunkell
- 5 Burrows
- 6 Mackay
- 7 Hubbard
- 8 Smart
- 9 Horsfield
- 10 Noble
- 11 Rogers
- 12 Peplow

Colours: Red and White

### SHEFFIELD WEDNESDAY

- 1 Grummitt
- 2 Rodrigues
- 3 Clements
- 4 Prohett
- 5 Holsgrove
- 6 Pugh
- 7 Sinclair
- 8 Craig
- 9 Joicey
- 10 Sunley
- 11 Sissons
- 12 Prendergast

Colours: Blue and White





# Swindon Town Football Company Limited

Registered Office County Ground, Swindon

**President** W J Castle  
**Vice-Presidents** J Davies H Williams  
**Directors**  
**Chairman** H E Lane  
**Vice-Chairman** R Fricker  
T Beales F L Collings C Cowley A W Done  
C J Green Dr J Nicholas F Plyer  
K H Wilmer  
**General Manager** R A Morse  
**Secretary** R J Jefferies

## news & views

Today we resume in earnest our League programme, in an endeavour to ensure freedom from any relegation problems. We enter what is almost the last quarter of the season, with fourteen more games to play, after today, with seven home fixtures, and seven on opponents' grounds. Many of these matches will be very hard fought, as most of the teams are in the lower half of the table.

We entertain Oxford, Luton, Cardiff City, Watford, and Orient. All very much in need of points, as are Portsmouth, Bristol City and Charlton, whom we visit. Important games, every one of them.

We also visit clubs aiming for promotion; namely Middlesbrough, Millwall, and Norwich City, so our programme is not an easy one by any means.

Another surprising factor arises as a result of the Cup-ties played last week. Three teams, and possibly four, below us are still actively engaged in the F.A. Cup. Whether that will be an advantage to us it is hard to say. Cup football often takes its toll on the teams concerned, but on the other hand success seems to bring success, and those teams still in the Cup competition must surely be on the crest of the wave. Portsmouth, Hull City and Orient are already through to the next round and possibly Cardiff City. Strangely enough, only one team in the top half of the Division 2 table is definitely in the Fifth Round, namely Bir-

mingham, with two others, Sunderland and Middlesbrough, possibilities. We entertain the former, but must visit the latter, and both those teams are still in the promotion race.

We frequently receive enquiries regarding the size of our actual playing area. We have always understood the pitch was one of the largest in League football, second only to Doncaster Rovers. Actually the club with the largest area is Hull City. Doncaster Rovers' pitch measures 119yd x 79yd (9,401 sq yd); Swindon Town 117yd x 78yd (9,026 sq yd); Hull City 115yd x 85yd (9,775 sq yd). Other well-known clubs have smaller grounds - Arsenal 115yd x 75yd; Chelsea 114yd x 71yd; Spurs 110yd x 73yd; West Ham 110yd x 72yd. One would have thought Chelsea to be a very large pitch, but the surrounding area creates that impression. Actually it is one of the narrowest pitches in the country. The smallest ground of all to my knowledge is Bournemouth, 112yd x 70yd (7,840 sq yd), almost 2,000 square yards less than Hull, or half an acre. Bristol Rovers' ground is exactly the same size as the County Ground.

Today we entertain, for only their second League game at Swindon, Sheffield Wednesday. Earlier in the season we lost at Hillsborough 0-1, after Wednesday had enjoyed almost all of the game.

Last season, however, was much better, as we drew 2-2 at Sheffield and won our home fixture 3-0. This was an excellent game, with Swindon showing fine form. This was Porter's first game in the senior team, at outside-right. Half-time score was 2-0, goals by Rogers (a penalty after 5 minutes)

and Thomas (35 minutes). Rogers scored again 10 minutes after the interval.

Swindon: Downsborough; Thomas, Trollope; Butler, Burrows, Harland; Porter, Gough, Horsfield, Noble, Rogers.

Sheffield Wednesday: Grummitt; Rodrigues, Wilcockson; Prohett, Ellis, Todd; Sinclair, Pugh, Warboys, Prendergast, Sissons.

It was pleasing to see our old friend Tony Gough doing so well for Hereford in their victory over Newcastle. Tony, as we all know, was a great hearted player. Also excelling in the same team was a Swindon lad, Dudley Tyler, who played several seasons for Pinehurst Youth Centre. A splendid result for Hereford, but a terrible blow to Newcastle United, one of the finest clubs in the country.

Sheffield possesses one of the finest grounds in the country at Hillsborough, with excellent stands on three sides. The one on the North Side accommodates 10,000 seats without any obstruction to the view. Naturally it was one of the grounds on which World Cup matches were played in 1966.

Formed in 1867 the Club has a splendid record, having won the championship of Division I on four occasions; winners of Division II five times; and F.A. Cup winners three times.

Their present manager is Derek Dooley, who still holds the Club record for scoring the most goals in one season, i.e. 46 in 1951/52. Unfortunately soon afterwards he was injured, and had to have a leg amputated. However, he seems to be making an excellent job as manager, after succeeding our old friend Danny Williams.



## Sheffield Wednesday F. C.



Back row (left to right): Derek Dooley (Team Manager), Mick Prendergast, Steven Downes, Dave Sunley, Alan Thompson, Peter Grummitt, John Holsgrove, Peter Springett, Colin Prophet, Sammy Todd, Paul Taylor, Sam Ellis.  
Front row (left to right): Ken Burton, Jackie Sinclair, Graham Pugh, Dave Clements, Peter Rodrigues, Brian Joicey, John Sissons, Tommy Craig, Eric Prudham, Ron Staniforth (Trainer).



# our visitors

## Sheffield Wednesday



### Graham Pugh

Wing-half. Borne Hoole, Cheshire 12th February, 1948. Debut 9th April, 1966 and a member of the 1966 Cup Final team at the age of 18. Under-23 international. Height 5ft 7in, weight 11½st. League appearances: 101. Goals: 6.

### Tommy Craig

Midfield player. Born Aberdeen 21st November, 1950. Captain of Scotland Youth team and signed by Wednesday for a club record fee of £100,000 on 7th May, 1969. Height 5ft 6in, weight 11st. League appearances: 80. Goals: 9.

### Steven Downes

Centre-forward. Born Leeds 2nd December, 1949. Signed from Rotherham 23rd December, 1969. Debut v Sunderland 26th December, 1969. Height 5ft 10in, weight 12st 5lb. League appearances: 24. Goals: 4.

### Sam Ellis

Centre-half. Born Ashton-under-Lyme, 12th September, 1946. Member of the 1966 Cup Final team. England Under-23 international. League debut April, 1966. Height 5ft 11in, weight 12st 9lb. League appearances: 156. Goals: 1.

### Peter Grummitt

Goalkeeper. Born Bourne, Lincs., 19th August, 1942. Signed from Nottingham Forest 26th January, 1970. Debut v Coventry, 28th January, 1970. England Under-23 international and a member of the F.A. party to Australia in 1971. Height 5ft 11in, weight 11st 5lb. League appearances: 56.

### John Holsgrove

Centre-half. Born Southwark, London. Signed for £50,000 from Wolves on 24th June, 1970. Formerly with Spurs as a boy and then with Crystal Palace. Played 169 games with Wolves and 17 with Palace. Height 6ft 2¼in, weight 12st 4lb.

### Mick Prendergast

Forward. Born Denaby Main, 24th November, 1950. Joined club after playing with Don and Dearne Boys. Debut v Newcastle 24th November, 1967. Top scorer last season with 16 League goals. Height 5ft 8in, weight 12st. Appearances: 51. Goals: 20.

### Colin Prophett

Centre-half. Born Crewe 8th March, 1947. Debut v Arsenal 6th September, 1969. Height 5ft 11in, weight 11st 8lb. League appearances: 59. Goals: 5.

### Eddie Prudham

Forward. Born Gateshead, 12th April, 1952. Signed pro forms July 7th, 1969. Debut v Cardiff City 9th January, 1971. Height 5ft 7in, weight 9st 12lb. One League appearance.

### Peter Rodrigues

Full-back. Welsh international, and now club captain. Signed from Leicester City 15th October, 1970. Debut v Charlton 17th October, 1970. Many times Welsh international after career with Cardiff and Leicester. Member of Welsh F.A. team to New Zealand in the summer. Height 5ft 9in, weight 11st 6lb. Appearances: 25.

### Kenneth Burton

Full-back. Born Sheffield 11th February, 1950. Originally a wing-half and a Youth international but now converted into a full-back. League debut v Stoke, 30th November, 1968. Height 5ft 8in. weight 11st 6lb. League appearances: 54. Goals: 2.

### Jack Sinclair

Winger. Born Dunfermline, 21st August, 1943. Signed from Newcastle 16th December, 1969. Debut v Sunderland 26th December. Holder of Fairs Cup Winners Medals with Newcastle. Height 5ft 6in, weight 10st 8lb. Appearances: 57. Goals: 10.

### John Sissons

Winger. Born Hayes, Middlesex 13th September, 1945. Signed from West Ham 1st August, 1970. Debut v Bolton 2nd September, 1971. England international at schoolboy and youth level. Holder of European Cup Winners Cup medal with West Ham and F.A. Cup winners medal. Height 5ft 7in, weight 11st. Appearances: 36. Goals: 3.

### Peter Springett

Goalkeeper. Born Fulham 8th May, 1946. Signed from Q.P.R. 22nd May, 1967 in unique part exchange deal for his international brother, Ron. Holder of England caps at Under-23 level and League Cup winners medal with Q.P.R. Height 5ft 10in, weight 12st. Appearances: 107.

### David Sunley

Forward. Born Skelton, Yorks., 6th February, 1952. League debut v Birmingham, 12th December, 1970. Height 5ft 9in, weight 11st 3lb. Appearances: 17. Goals: 2.



## our visitors *continued*

### Alan Thompson

Half-back. Born Liverpool 20th January, 1952. Former captain of Liverpool Boys. Debut v Q.P.R. 12th September, 1970. Height 5ft 10in, weight 11st. Appearances: 31.

### Sammy Todd

Wing-half. Born Belfast 22nd September, 1945. Signed from Burnley May, 1970. Northern Ireland international. Debut v Charlton 15th August, 1970. Height 5ft 11½in, weight 11st 6lb. Appearances: 20. Goals: 1.

### Paul Taylor

Wing-half. Born 3rd December, 1949. Signed pro 1st July, 1971. Former P.E. student at Loughborough College. No League experience.

## Behind the scenes



**Bert Middleton (Box Office Operator)**

## Public Relations Column



In my last notes I invited shareholders to hand their names and addresses into the Office at the County Ground if they would like to look over the new Stand and the facilities now offered, such as dressing rooms, medical room, etc. The response has not been too great, and I must make the closing date Thursday, 17th February. So shareholders, if you are interested, don't delay. After we have catered for shareholders it is the wish of the Board to have some open evenings for the public in general, as many of you have expressed a wish to attend.

Would you care to assist the Club by selling some Grand National Draw tickets? If so, contact Mr. Phil Hart at his office at the County Ground after today's match, which is situated under Town End stand, or phone him at Purton 601.

I am also seeking match ball donators. Who would like to be first? Each match ball costs £13.75, and if you or your boss would care to donate, a mention will be made in the programme and on the tannoy.

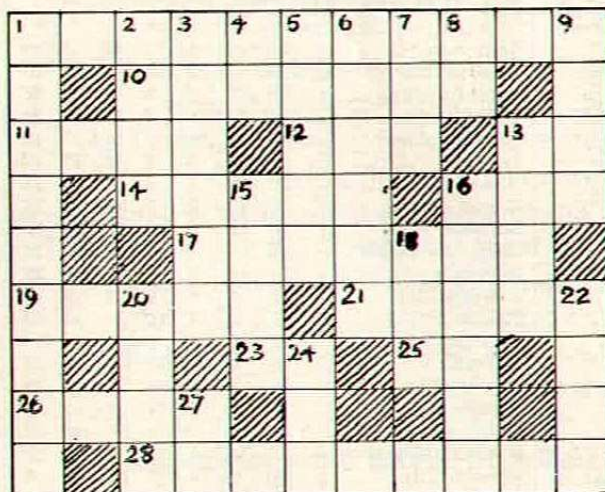
I would like to thank all the people who have written to me, some with useful suggestions and information which has been acted upon.

More youngsters. Our latest acquisition to the apprentice staff next season will be David Syrett, younger brother to Peter, and Geoffrey Chalkin. David has been wanted by Southampton, so we have done well in recruiting him. Geoffrey was captain and star performer of the Swindon Schools team this year, and we feel that it could well be a case of another local boy making good. Dennis Cocker and Trevor Kirk have recently left the Club for different reasons. Dennis has returned to Sheffield, whilst Trevor has returned to Bridgwater. We wish them both the best of luck.

(continued on page 10)

## A soccer crossword for half-time

(Answers on page 8)



### Across

- 1 Leeds United nickname (3, 8).
- 10 Arsenal striker (7).
- 11 Young? (4).
- 12 Most defences try to keep one on George Best (3).
- 13 Leeds Scotsman (INIT) (1, 1).
- 14 Apprentice professionals are a kind of this (5).
- 16 Nurse? (3).
- 17 All players must be this with their passes (7).
- 19 Bristol Wanderer? (5).
- 21 They are studded (5).
- 23 Scottish International of 1952 from Morton (INIT) (1, 1).
- 25 Ex-Hartlepool's man (INIT) (1, 1).
- 26 Arsenal's Secretary (4).
- 28 Leeds midfielder player (5, 4).

### Down

- 1 W.B.A. goalscorer (4, 5).
- 2 Stoke City Skeels? (4).
- 3 This Division 1 side is clearly royal (6).
- 4 Initially a Millwall forward (1, 1).
- 5 This time of the game when team can relax (5).
- 6 Spurs International (6).
- 7 A football should be this shape (3).
- 8 Huddersfield winger (INIT) (1, 1).
- 9 Clubs sometimes do this with their players (4).
- 13 Retired Brazilian star (4).
- 15 Often describes the action of a winger (4).
- 16 West German star (6).
- 18 Can hold up a game (3).
- 20 Port? (4).
- 22 Halifax ground (4).
- 24 Assent from a French referee (3).
- 27 Retired Cardiff City player (INIT) (1, 1).



# Fixture list 1971/72 Swindon score first

## Division II

### August

14 Blackpool	(A)	1-4
18 League Cup (1)		
21 Charlton Athletic	(H)	2-1
28 Carlisle United	(A)	0-0

### September

1 Watford	(A)	0-0
4 Queen's Park Rangers	(H)	0-0
8 Colchester United (League Cup 2)	(A)	1-4
11 Sunderland	(A)	0-1
18 Fulham	(H)	4-0
25 Cardiff City	(A)	1-0
29 Hull City	(A)	0-2

### October

2 Bristol City	(H)	0-1
6 League Cup (3)		
9 Luton Town	(A)	0-0
16 Blackpool	(H)	1-0
19 Birmingham City	(H)	1-1
23 Sheffield Wednesday	(A)	0-1
27 League Cup (4)		
30 Middlesbrough	(H)	0-1

### November

6 Oxford United	(A)	1-1
13 Millwall	(H)	0-2
17 League Cup (5)		
20 Preston North End (F.A. Cup 1)	(H)	1-1
27 Burnley	(A)	2-1

### December

4 Norwich City	(H)	0-1
11 Orient (F.A. Cup 2)	(A)	1-0
18 Queen's Park Rangers	(A)	0-3
27 Portsmouth	(H)	3-1

### 1972

#### January

1 Fulham	(A)	4-2
8 Carlisle United	(H)	0-0
15 Arsenal	(H)	0-2
22 Hull City	(H)	2-1
29 Birmingham City	(A)	1-4

#### February

5 F.A. Cup (4)		
12 Sheffield Wednesday	(H)	
19 Middlesbrough	(A)	
26 Oxford United (5)	(H)	

#### March

4 Millwall (League Cup Final)	(A)	
11 Luton Town	(H)	
18 Charlton Athletic (6)	(A)	
25 Sunderland	(H)	
31 Bristol City	(A)	

#### April

1 Portsmouth	(A)	
4 Cardiff City	(H)	
8 Preston North End	(A)	
15 Burnley (Semi-Finals)	(H)	
22 Norwich City	(A)	
25 Watford	(H)	
29 Orient	(H)	

#### May

6 F.A. Cup Final		
------------------	--	--

## Football Combination

### August

14 Queen's Park Rangers	(H)	0-2
17 Chelsea	(H)	2-2
21 Bristol City	(A)	3-2
24 Birmingham City	(A)	0-4
28 Ipswich Town	(H)	2-2
31 Swansea City	(H)	2-3

### September

4 West Ham United	(A)	0-2
11 Fulham	(H)	2-2
14 Swansea City	(A)	1-1
18 Cardiff City	(A)	1-0
25 Crystal Palace	(H)	3-1

### October

2 Queen's Park Rangers	(A)	2-4
9 Bristol City	(H)	0-0
23 Plymouth Argyle	(H)	4-1
27 Reading	(A)	2-1

### November

6 Oxford United	(H)	1-2
13 Tottenham Hotspur	(A)	0-2
20 Arsenal	(A)	2-1
27 Southampton	(H)	3-2

### December

4 Leicester City	(A)	1-1
11 Bristol Rovers	(H)	5-1
18 Arsenal	(H)	4-3
27 Bournemouth	(A)	1-2

### 1972

#### January

1 West Ham United	(H)	5-2
8 Ipswich Town	(A)	0-6
22 Chelsea	(A)	1-5
29 Birmingham City	(H)	2-2

#### February

5 Norwich City	(A)	
12 Plymouth Argyle	(A)	
19 Reading	(H)	
23 Oxford United	(A)	

#### March

4 Tottenham Hotspur	(H)	
11 Fulham	(A)	
18 Cardiff City	(H)	
25 Crystal Palace	(A)	

#### April

1 Bournemouth	(H)	
8 Leicester City	(H)	
15 Southampton	(A)	
22 Norwich City	(H)	
29 Bristol Rovers	(A)	

Copyright of The Football League Ltd. and not to be reproduced without permission.

# League table division 2

(up to and including Tuesday, 8th February, 1972)

	P	W	D	L	F	A	Pts.
Norwich City	27	15	9	3	40	21	39
Millwall	27	12	12	3	44	32	36
Q.P.R.	27	13	9	5	42	22	35
Birmingham City	27	10	12	5	41	26	32
Sunderland	27	10	11	6	40	40	31
Carlisle United	27	12	6	9	40	33	30
Middlesbrough	27	13	4	10	35	34	30
Burnley	27	12	5	10	44	34	29
Preston North End	27	10	8	9	37	31	28
Blackpool	27	11	5	11	40	32	27
Oxford United	27	9	9	9	29	30	27
Luton Town	28	7	13	8	32	34	27
Sheffield Wed.	27	8	10	9	35	35	26
<b>Swindon Town</b>	<b>27</b>	<b>9</b>	<b>8</b>	<b>10</b>	<b>25</b>	<b>29</b>	<b>26</b>
Bristol City	27	9	7	11	36	34	25
Portsmouth	27	8	9	10	42	43	25
Charlton Athletic	27	10	5	12	39	47	25
Orient	27	9	6	12	35	44	24
Fulham	27	9	3	15	32	53	21
Hull City	27	7	6	14	29	37	20
Cardiff City	26	6	6	14	35	48	18
Watford	27	4	5	18	18	51	13

# Football Combination

(up to and including Saturday, 5th February, 1972)

	P	W	D	L	F	A	Pts.
Tottenham H.	26	20	5	1	56	9	45
Ipswich Town	28	14	9	5	64	31	37
Oxford United	27	14	8	5	38	27	36
Q.P.R.	27	11	9	7	53	30	31
Leicester City	26	12	6	8	51	37	30
Arsenal	27	13	3	11	48	35	29
Bristol City	26	12	5	9	44	32	29
Crystal Palace	25	12	4	9	41	39	28
<b>Swindon Town</b>	<b>28</b>	<b>10</b>	<b>8</b>	<b>10</b>	<b>52</b>	<b>56</b>	<b>28</b>
West Ham United	25	11	4	10	47	39	26
Birmingham City	25	10	6	9	28	35	26
Swansea City	26	9	8	9	30	39	26
Fulham	27	9	7	11	31	38	25
Southampton	25	9	6	10	27	30	24
Chelsea	26	8	6	12	30	36	22
Cardiff City	26	8	4	14	37	38	20
Bournemouth	27	7	6	14	31	50	20
Bristol Rovers	26	6	7	13	27	46	19
Plymouth Argyle	27	7	3	17	31	62	17
Norwich City	25	6	4	15	24	48	16
Reading	25	6	4	15	22	55	16



# London Entertainment

BOOK HERE



WE HAVE TICKETS FOR EVERYTHING  
SWINDON TOWN — KEITH PROWSE



Book right here for all London entertainment events. Get the 'best seats' from us – we charge only the price on the ticket, no additional extras for telephone charges – no problems. A unique service for  
**Theatre and Cinema : Sporting Events : Concerts  
Opera : Ballet : Variety Shows : Sightseeing Tours**



## ANOTHER NEW SERVICE! SWINGIFT

**Stuck for an idea for Birthday, Anniversary or Wedding Present?**

How about a gift voucher, exchangeable for tickets to Theatre, Cinema, Sporting Events, Concerts, Opera, Ballet, Sightseeing Tours, Car Hire, or Restaurants.

These vouchers are available at the Box Office during normal business hours. It makes a great gift – one that fits everyone's pocket, as vouchers are obtainable in one pound increments from £1 – £10. The recipient picks what he wants to do and when he wants to do it, thus eliminating any possible disappointment.



**Why not ask for more details from Bert Middleton at the Box Office**

## Supporters club notes

We all remember that Swindon 'transferred' Danny Williams a few seasons ago to today's visitors, Sheffield Wednesday. Today, Danny is at Mansfield, and we all wish him well in his efforts to get the 'Stags' out of trouble.

Today we are set for a game that will perhaps be more entertaining than the game at Hillsborough earlier in the season, and we look forward to seeing their new goalscorer, Brian Joicey, in whom our own Club was interested earlier in the season.

The Annual Dinner and Dance will be at the Goddards Arms Hotel on Tuesday, 7th March at 7 p.m. for 7.30 p.m. Tickets are available in the Social Club, priced £1.75 each.

### Tote Results

Week commencing 23rd January, 1972. Winning numbers 7 and 2. 11 winners share £62. Winning ticket numbers 34130, 25390, 33275, 32363, 32241, 33122, 32068, 32691, 25369, 32906, 33187.

Week commencing 30th January, 1972. Winning numbers 22 and 30. One winner wins £60. Winning ticket number 35789.

### Forthcoming Social Club entertainments

Tonight – Dancing to Mother Green.

Saturday, 19th February – Dancing to Country Style.

Saturday, 26th February – Dancing to New Embassy Rhythm.

At the time of writing the two football sections have been having mixed fortunes, the Supporters' Club having beaten R. A. Lister 7-2, lost the next week 6-3 to VWH. The Social Club lost their only match 3-0 to W. H. Smith.

The Supporters' Club hope to raise £1,500 to provide equipment for the medical room in the new Stand. £1,000 has already been donated to football to this end and a collection will be held today, in an effort to raise £500 in the next few months. We hope that you will give generously.





Chaos in the Hull goalmouth as Terry Neil tussles with Frank Burrows for a loose ball, which eventually they managed to clear.

Peter Noble poised to head home the first goal as Hull defenders misjudge this high corner.



#### CROSSWORD ANSWERS

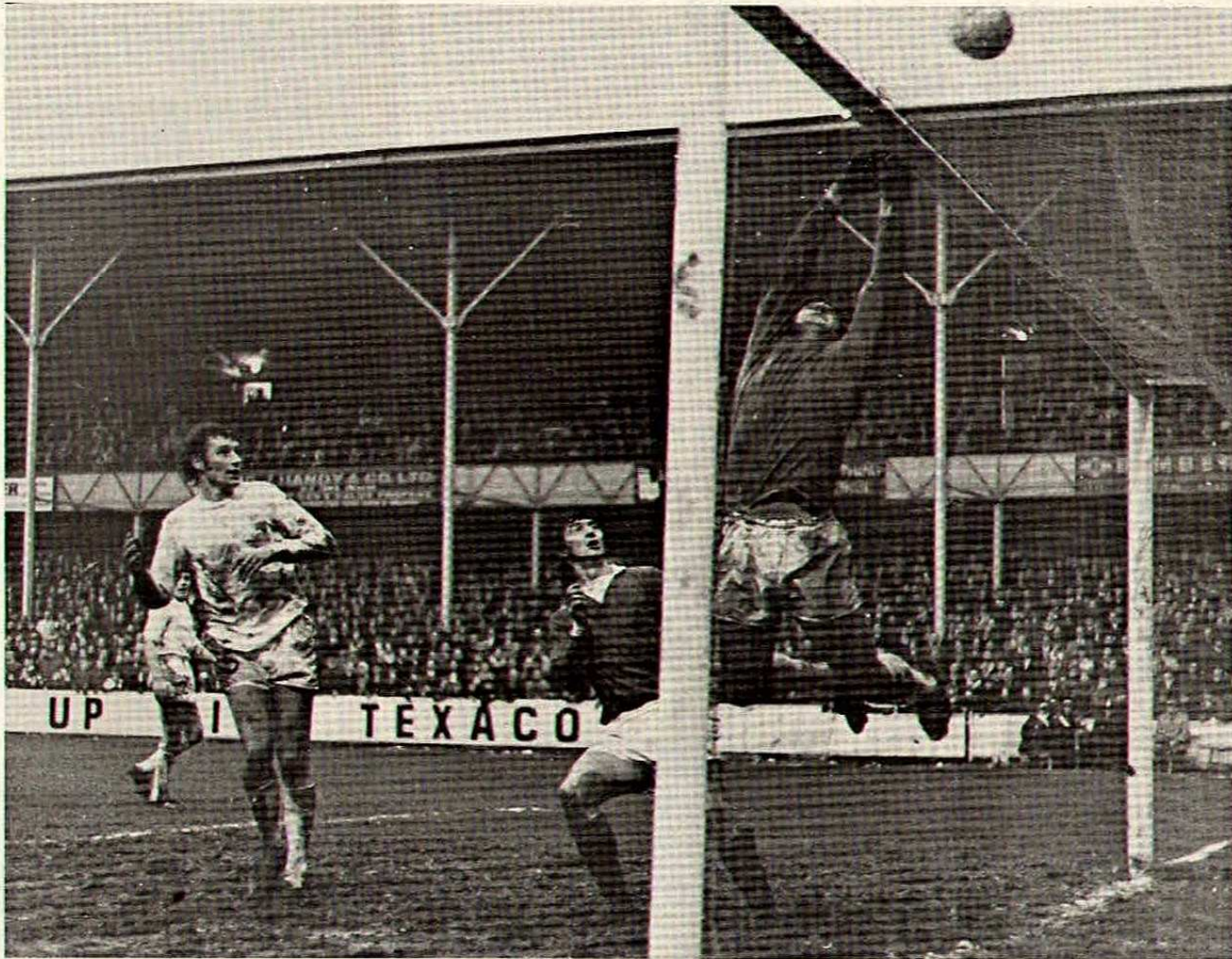
##### Across

- 1 The Peacocks.
- 10 Radford.
- 11 Neil.
- 12 Tab.
- 13 P.L. (Peter Lorimer).
- 14 Cadet.
- 16 Mel.
- 17 Careful.
- 19 Rover.
- 21 Soles.
- 23 T.O. (T. Orr).
- 25 G.L. (George Luke).
- 26 Wall.
- 28 Eddie Gray.

##### Down

- 1 Tony Brown.
- 2 Eric.
- 3 Palace.
- 4 E.D. (Eamonn Dunphy).
- 5 After.
- 6 Coates.
- 7 Orb.
- 8 C.D. (Colin Dobson).
- 9 Sell.
- 13 Pele.
- 15 Dart.
- 16 Muller.
- 18 Fog.
- 20 Vale.
- 22 Shay.
- 24 Oul.
- 27 L.D. (Len Davies).

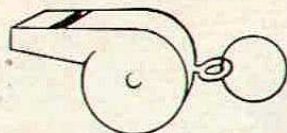




Arthur Horsfield looks up to see McKechnie just fist over a powerful shot, watched by skipper Terry Neil.



## the man in



## the middle

### R. C. Crabb

from Exeter

Started refereeing in 1952 while serving with the Royal Marines. He refereed with the Western League before being appointed to the Football League Line in 1967. Two years later he became a supplementary referee and was appointed to the full list in 1970.

In 1955 he refereed a Mediterranean Fleet v Italian Army game and has also officiated in Devon Senior, Junior and Youth Finals.

Mr. Crabb, a prison officer, is married with two children, a boy and a girl. He is interested in carpentry and in the evenings gives instruction in sport and games. He is a member of the Devon F.A. Coaching Panel for referees.

#### PUBLIC RELATIONS COLUMN

(continued from page 5)

That is all this time. Don't forget the useful ways you can help the Club: Become a competition agent (contact J. Selwood, 103 Broad Street, Swindon); sell Grand National tickets (contact Phil Hart, County Ground); donate a match ball (contact Bob Jefferies, Secretary, County Ground).

F. L. Collings

**Cover photo:** Hull goalkeeper McKechnie goes the wrong way as Don Rogers turns towards goal, only to put his shot inches wide.

## Golden Goal Competition

### Would you like £60?

You would? – then make sure you buy your **Golden Goal** tickets at every first team home match. For a minimum outlay of only five new pence you could win at least £60 with the possibility of two further prizes of £10.

Last season nearly £2,000 was won by lucky **Golden Goal** ticket supporters. You could be one of this season's lucky winners.

Don't forget – the more tickets you buy the greater is your chance of winning that £60.

Look out for the **Golden Goal** ticket sellers and make yourself some money.

The prizes **must** be won every time.

Tickets bearing the time in minutes and seconds will be on sale before the game – price five pence. The ticket with the exact time when the **first goal** is scored will win **£60**. If exact time not claimed prize will be paid to the nearest claim received.

The ticket bearing the time when the **last goal** is scored will win **£10**. Again if exact time is not claimed the prize will be paid to the nearest claim received.

The Official Announcer will be the timekeeper and he will announce the official time of both goals.

Should only one goal be scored the winning ticket holder will receive £70.

In the event of no goals tickets bearing no score will win £10.

A further prize of £10 will also be given for the ticket bearing the number corresponding to the official attendance at the match.

#### HULL CITY (Saturday, 22nd January, 1972)

**1st Goal (£60)** 5m 52s — H. Hutchins, Ridgeway School, Wroughton.  
**Last Goal (£10)** 87m 05s — C. Partridge, 26 Appleford Road, Sutton Courtenay, Berks.  
**Attendance (£10)** actual 11,563, paid on 15,003 — D. Moreton, 28 Nindum Road, Swindon.

## Forthcoming matches

**TUESDAY, 15th FEBRUARY, 1972**

**Football Combination – Kick-off 7.30 p.m.**

### Swindon Town v Reading

**SATURDAY, 19th FEBRUARY, 1972**

**F.A. Youth International – Kick-off 3 p.m.**

### England v Wales

**SATURDAY, 26th FEBRUARY, 1972**

**Division II – Kick-off 3 p.m.**

### Swindon Town v Oxford United



# follow the robins . . .

## to Middlesbrough Saturday 19th February

From Swindon take A361 to Highworth, Lechlade, Burford and Shipton-under-Wychwood until reaching Chipping Norton.

Continue on A361 through Bloxham to Banbury. Take A423 via Mollington, Ladbroke and Southam, until turning right at junction with B4100 and joining A426 at Dunchurch. Follow road to Rugby, then at Gibbet Hill roundabout, cross A5 and carry on for 2½ miles on the A4114, until reaching M1 motorway.

Follow M1 for 66½ miles until joining M18

Intersection. Follow signs 'North Doncaster M18', until coming to A1M Intersection; keep to signs 'North Doncaster A1(M)'. Continue on motorway for 14½ miles then join A1 for 43½ miles. After this take A168 through Dishforth and Topcliffe to Thirsk. From here take A170 for ½ mile then join A19 for 11½ miles to Cleveland. Take A172 from here and continue for 17 miles until reaching Middlesbrough and **Ayresome Park**.

244½ miles



## Key of the board

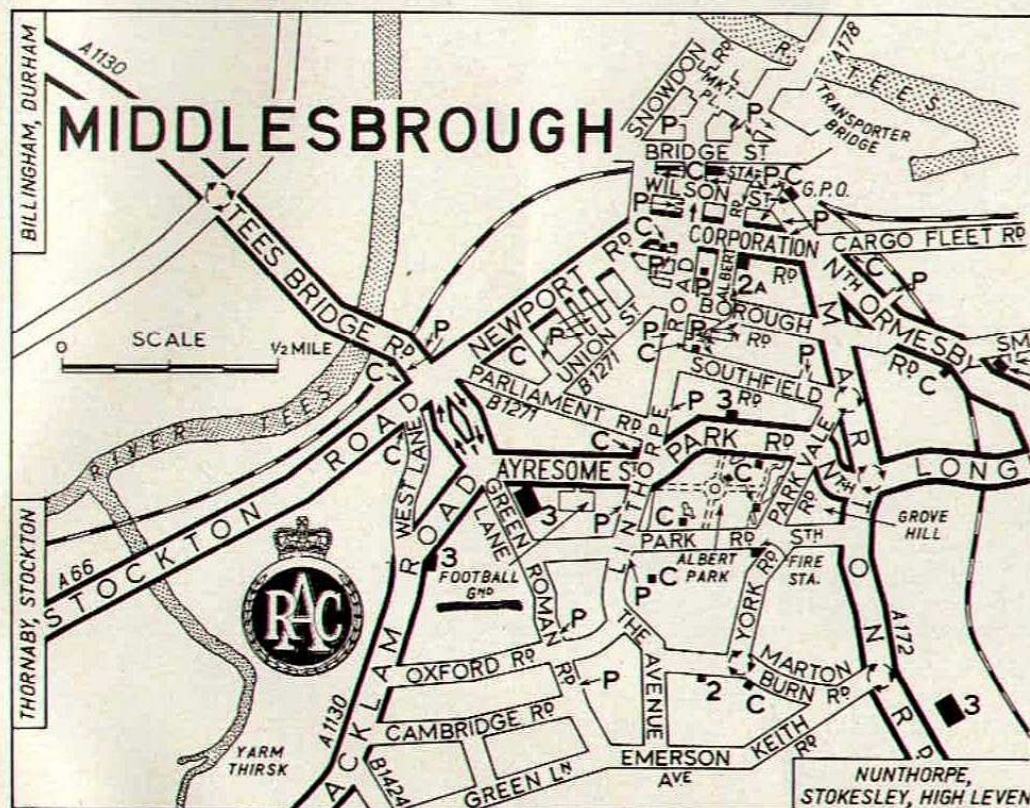
### First Section

- A—Arsenal v Derby County
- B—Crystal Palace v Coventry City
- C—Everton v Leeds United
- D—Huddersfield Town v Liverpool
- E—Leicester City v West Bromwich A.
- F—Manchester United v Newcastle United
- G—Nottingham Forest v Tottenham H.
- H—Sheffield United v Manchester City
- I—Southampton v Chelsea
- J—Wolverhampton W. v West Ham United
- K—Burnley v Hull City
- L—Carlisle United v Luton Town
- M—Charlton Athletic v Cardiff City
- N—Fulham v Portsmouth
- O—Norwich City v Millwall
- P—Orient v Bristol City
- Q—Preston North End v Birmingham City
- R—Queen's Park Rangers v Blackpool
- S—Sunderland v Oxford United
- T—Watford v Middlesbrough

### Second Section

- A—Aston Villa v Bournemouth
- B—Bradford City v Barnsley
- C—Brighton v Walsall
- D—Bristol Rovers v Rochdale
- E—Mansfield Town v Blackburn Rovers
- F—Rotherham United v Shrewsbury Town
- G—Swansea City v Bolton Wanderers
- H—York City v Port Vale
- I—Darlington v Aldershot
- J—Hartlepool v Chester
- K—Northampton v Doncaster Rovers
- L—Peterborough United v Lincoln City
- M—Reading v Workington
- N—Southend United v Brentford
- O—Southport v Grimsby Town

Route kindly supplied by R.A.C.



### 1972 GRAND NATIONAL DRAW

Tickets are now available at 5p each, in books of 20. Anyone wishing to sell books should contact Mr. P. Hart, either at the County Ground or at 65 Pavenhill, Purton, Wiltshire, telephone Purton 601.





**Team up with Texaco**